



Newsletter

Avondale Primary School
avondaleprimary.school.nz

Ph: 09 828 8929 • Fax: 09 820 3624
Email: office@avondaleprimary.school.nz
Crayford Street West, Avondale, Auckland 1026



Creative Learners, thinkers and communicators who can effectively make a difference

Kia ora mai

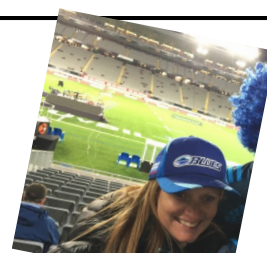
Judging by the big smile on the face of Mrs Wilkinson after the game last night, I am thinking there is some truth to the rumour that she used to be a cheerleader for the Blues in another life. Such passion and parochialism is to be commended of course! I have been in email contact with some Lions supporters arriving soon from the UK and was not able to reassure them that the tour was going to get any easier. Well done to Sonny Bill and the team. I heard the Eden Park crowd was very gracious in victory – this is the main thing.

There has been a lot of excitement around the school recently as students explored an APP that allowed them to play a game called Magical Park. This is a good example of a digital experience that is tremendous fun and a wonderful learning opportunity. Well done to the staff for supporting our kids to explore the digital world in a responsible way. This fits nicely with an exciting project being planned by the Board to modernise our junior block. Last week Mrs Wilkinson, Mrs Edwards, myself and our Property Manager visited four schools that have recently been modernised in line with the Ministry of Education's expectations that we create more innovative learning environments. Yesterday Mrs Edwards ran a staff forum when we had an opportunity to share what we had seen and have the draft plans explained. If any parents are interested in what is happening – and I must stress that it is very early days – pop in and have a chat with Joan, Sharron, Kim or I and we will be pleased to show you some design ideas. Things are moving in an exciting direction in education; feedback and questions from parents are always valued.

Well done to the rugby league teams who participated in the Western Zone Tournament last week. In all my years at Avondale Primary, I have never been with such a disciplined and respectful group of young sporting ambassadors. It was a privilege. The games were tough and everyone played with the right attitude and to the best of their abilities. I could not ask for more. Nga mihi. Thanks also to Mr McCutcheon for doing so much of the behind-the-scenes organising.

Go well and stay warm.

Greg



dates for your diary

WEEK 6

June 9th Lunch Orders

WEEK 7

June 12th School assembly 10am

June 13th Sport Waitakere Funskills session for Tui and Pukeko
Whanau Leader meeting

June 14th **Swimming Carnival** Cameron Pools
Australian Exams (ICAS) - Spelling
Tech Angels meeting

June 15th **Blue Day** - dress up day to support Men's Health
Kiwisports Basketball for Kea and Takahe
Australian Exams (ICAS) - Writing
Whanau Fitness
Duffy Theatre 11am all welcome

June 16th **School Photo day**
Lunch Orders

WEEK 8

June 19th School assembly 10am

June 20th Sport Waitakere Funskills session for Tui and Pukeko
Whanau Leader meeting

June 22nd **Y3/4 Sport Waitakere Football tournament**
Kiwisports Basketball for Kea and Takahe
Tech Angels meeting
Newsletter #9 comes home

School donations



First Donation notice for the year was handed out to students yesterday. We recognise that there are a lot of other expenses early in the school year and so have left until now to request this payment.

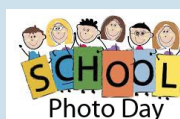
If you are unable to pay the full amount immediately, we are happy to receive instalments via internet banking or automatic payment. Our bank details are on the notice. Just remember to pop your child's name in the reference field. We will issue a tax receipt if you require one, when the full amount has been received. Thank You.

School Photos

Class, Individual and Sibling Photos – These will be taken **Friday next week – 16 June.**

Named order envelopes were given out to students on Monday last week. These must be returned by Thursday, 15 June, with the correct payment inside as they are given to the photographers on the day. Sibling order envelopes are on the counter in the office – these are only for students attending here.

Class Photos can be ordered after photo day.



Values & virtues

Our focus for the next two weeks

Value:

Resilience / Manawarao

We are resilient. Whatever challenges today brings we are confident that we will achieve our goals. We are reminded of our own strengths.

Virtue:

Courage / Hautoa

We show courage. We are willing to try new things. We admit mistakes and learn from them. We listen to our heart. We have the courage to do the right thing.

friends of avondale

Our next meeting is Wednesday 5th July at 2pm in the staffroom.

School quiz

SATURDAY 12TH AUGUST

Put this date in your diary

This is always a fabulous night out.

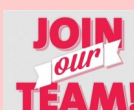
Contact us on 828 8929

or email Kim at kimw@avondaleprimary.school.nz

Or Sharron at

sharrone@avondaleprimary.school.nz

Please check out our facebook page for regular updates
<https://www.facebook.com/FriendsOfAvondalePrimary/>



term dates

TERM 2:

Monday 1 May – Friday 7 July

TERM 3:

Monday 24 July – Friday 29 September

Teacher Only Day (school closed) Wednesday 23 August

TERM 4:

Monday 16 October – Friday 15 December (TBC)

Labour Day (Public Holiday) – Monday 23 October

A message from our Wastewise Team

Instead of buying individual ...

mini yoghurts, fill a mini sealable container with a yoghurt you've bought in bulk (or homemade) and add sliced fruit, nuts and seeds or a handful of frozen berries.



A message from our Travelwise Team

Please be considerate of our pedestrians

The Travelwise team would like all drivers to take extra care at 3pm. Please don't drive on the footpath or enter the carpark for safety reasons.



introducing . . . Our Whanau Leaders

We have 16 incredible Year 6 Leaders.

To acknowledge and thank them for the wonderful impact they are making around our school. No 3 is Aniles

aniles

Kauri Year 6 Room 12

Talofa Lava and hello, my name is Aniles and I am in Rm12.
I am proud to be a 2017 Kauri Whanau Leader.

My interests are making slime, solving challenging math problems, helping children, watching YouTube, making videos and laughing at funny jokes.

I feel very honoured to be a Whanau Leader and I hope to be a positive role model for my peers, as well as make the most of this wonderful opportunity that I have been given.

Lastly, I just want to have the most exciting time of fun learning, helping others as best as I can and being an excellent leader in my final year here at APS.

Fa'afetai lava!



Look at this amazing photo. This is Aniles and a few other APS students who picture on the front cover of the latest KidsCan magazine. Go to our FB page to get the link to the entire Autumn edition.



Eco Soap

We are selling Eco Soap as a school fundraiser. Each bar costs \$2.50 to buy and \$1.00 comes back to us.

We have two kinds: lemongrass grapefruit & mint

School App!

DOWNLOAD IT TODAY!

Go to the app store and search Avondale Primary School. We now have nearly 150 users. This is a great communication tool.



Scholastic books

Lucky book orders Issue 3 Tues 20th June to school. If you are doing it online, it closes on 24th June

'turn it up for duffy books' Comp



Duffy Books in Homes in conjunction with The Rock Shop

have a competition running to win a **portable Casio**

Keyboard with stand and a Fiesta Classic Acoustic Guitar.

We had to make a tribute to our incredible Duffy Books in Homes sponsors FISHER FUNDS to thank them very much for their ongoing support.

Our sponsors are special to us. Without their aroha and support our kids would miss out on receiving their Duffy books. Our sponsors are the best!

Check out our entry on our FB page

<https://www.facebook.com/FriendsOfAvondalePrimary/>

or on the Duffy FB page

<https://www.facebook.com/duffybooks/?fref=mentions>

You can like it or share it as much as you like.

Magical Park

You may or may not know that something very, very exciting happened at our school last Thursday. We got the Magical Park game for 'free' for the next 2 months.

Magical Park turns a normal urban city park (or our school field) into a digital fantasy land... and gets our kids active.

There are already a few council funded public parks set up to play. Check out the link of other parks. <https://www.geopark.tech/magical-parks-map> To play download 'magical parks' from either the app store or google play.

Pop up to the school over the weekend and try to collect some dinosaur eggs or round up some kittens... but beware to the Pixie!!!!

So exciting!!!!!!



Magical Park

Written by Anabella Room 17

Today me and some of my classroom went down to the field and we played this game called magical park. It was a real good game. But then my shoes were so muddy, that I had to take them and my socks off and wear bare feet! The mud was cold, yuck and disgusting. In the game there were some aliens and bad fairies who can eat your kittens. But the one thing that I said in my brain, was that when you're playing Magical Park, you can see things on the screen that you can't see in real life. But they look like they're really there!



Disclaimer

The following notices are for your information only. The staff and BOT do not necessarily endorse or recommend them.

Community Planting Event

Warm up winter with our Community Planting Events happening in JUNE!

Join Neil & Friends of the Whau at **Ken Maunder Park, Saturday 10th June** and help us plant 1000 trees along Te Whau Pathway.

Also at **Archibald Park on Saturday 17th June** it's the Whau Clean-up Day!

Both events start at **10am to 12.30pm**.

Gloves, Spades and refreshments provided.

For more info phone **Neil on 0212950302** or feel free to turn up on the day.

The Whau River Catchment Trust (WRCT)

P: 09) 827-3374

E: info@whauriver.org.nz

W: www.whauriver.org.nz F: www.facebook.com/whaurivercatchment

June Community Planting events along Te Whau Pathway



Ken Maunder Park, Sat June 10, Archibald Park, Sat June 17, 10.00-12.30
Friends of the Whau are hosting community planting events along Te Whau Pathway in June.
Help us plant 1000 trees and find out about Te Whau Pathway in your neighbourhood.
It's also Whau Clean-up Day, June 17, so come down to plant and pick up some rubbish too.
Phone Neil for more info 021 295 0302 or feel free to turn up on the day.
Gloves, spades and refreshments provided.



You may need to put in a password and this would be 'Deal'

It would be much appreciated if you could please circulate this to your students and staff within your database and other channels.

Any issues please don't hesitate to contact Megan Garforth

T 09 913 0833

M 021 286 6338



Kidsactive School Holiday Activities

Some technology courses they offer:

Game Development and Coding

An introduction to computer game design and coding, using industry-standard software. Learn to use Unity, 3D modelling with Blender and learn C# coding.

Web Developer

Learn HTML and CSS - the languages of the web. This multi-disciplinary course will also touch on digital image manipulation to help make your site stand out from the crowd.

Minecraft Adventures

In this action-packed course, kids will progress through a series of custom Minecraft worlds, solving problems and honing their skills

The Bubble Dome Team

Address: 100 Neilson Street, Onehunga, Auckland 1061, New Zealand

Telephone: (NZ) 0800 438 282

(AU) 1800 11 55 62

Website: <http://bubbledome.com/>



Netball - SKYCITY Mystics vs Magic

We would like to offer your school the opportunity for students and families to purchase tickets for our next home game taking place at The Trusts Arena Monday 12th June - SKYCITY Mystics vs Magic - for the special rate of \$10 per ticket.

<http://premier.ticketek.co.nz/shows/show.aspx?sh=MYSVMAG217&eg=DEAL&ep=DEAL>

PLEASE SUPPORT OUR ADVERTISERS WHO SUPPORT OUR SCHOOL

Full GP Services incl ACC
ACC - free (enrolled patients).

Enrolled GP weekday fees
0-17yrs FREE 18yrs+ \$17
Open 7 Days
Mon to Fri 8-8 Weekends 9-2
Ph 8200085
1784 Great North Rd, Avondale



avondale
family health
centre

avondale
integrated
health

- Horizon Dental
- Physiotherapy & Acupuncture
- Podiatrist
- Chiropractor
- Midwives
- Avondale Plunket
- HearMe (free hearing test)
- Psychologist & Counseling Service



Avondale Primary

We provide safe, fun and affordable programmes for your children!

Before School Care: 7.30am – 8.30am

After School Care: 3.00pm – 6.00pm

Holiday Programme: Various hours

(WINZ SUBSIDIES AVAILABLE!!!)

Please contact us on avondale@kellyclub.co.nz and 021 120 3373
or visit our website www.kellyclub.co.nz

Weekly activities include: Sports, Crafts, Cooking, Games and trip days.

HARCOURTS AVONDALE

Your Local Real Estate Agency

OFFERING SPECIAL BUDGET PACKAGES FOR FAMILY & FIRST-TIME HOME BUYERS IN THIS SCHOOL

For honest, reliable, sound and efficient service in regards
with any of your Real Estate needs, call me anytime.

Here to help you move forward.

P: 09 825 1018 M: 021 880 080

E: meihulmody@harcourts.co.nz

Call me anytime for a free market appraisal



MEHUL MODY

"Committed to Achieving Customer Satisfaction"



Sales, Service and Spares for all outdoor power equipment



- LAWNMOWERS
- WEEDEATERS
- BLOWERS
- CHAINSAWS
- WATER BLASTERS
- HEDGE TRIMMERS
- SHARPENING SERVICE

Phone: 09 828 9438
www.avondalemowers.co.nz
2 St. Georges Road, Avondale • avondale_mowers@xtra.co.nz





Prochem PHARMACY
Avondale Branch

Your Community Pharmacy

- Prescriptions • Vitamins • Skin Care
- Beauty Products • ECP • Deliveries
- Sport Supplements & Nutrition • Pain Relief • Medico Packs

Opening Hours:

Monday-Friday: 8.30am-8.00pm – Saturday: 9.00am-2.00pm

1882 Great North Road, Avondale
Phone: 09 828 1710 Fax: 09 828 1720

PACIFIC LOANS LTD

Fast, Friendly, Cash Loans with a Smile

Phone: 09 820 2484 or 0800 744 227
2018 Great North Road, Avondale
www.pacificloans.co.nz

TONY MATICH MOTORS LTD

AUTO ELECTRICAL & ALL MECHANICAL REPAIRS
LPG & CNG INSTALLATIONS & SERVICE
W.O.F. ISSUED

2033 GREAT NORTH ROAD, AVONDALE
PHONE: 09 828 0257 FAX: 09 820 3427
matich@clearnet.nz

5% Discount for Staff and Families of Avondale Primary

Your caring health professionals...



Avondale Family Physiotherapy

Call us for an appointment

09 889 2913 or 021 0229 8838

83A Rosebank Road, Avondale

Web: www.avondalefamilyphysio.co.nz

ACC Registered

HELP

Help us to continue this free service for your school next year by advertising in this newsletter. What better way of keeping your business in front of the local community and help your school.

The cost is very reasonable!

Phone Newsletters Unlimited

(09) 817 3867



Dr Scott

Dr James

Dr Eluira

Dr Inah

Dr Talha

Ph: 09 818 8855

info@dentalcarewest.co.nz

182 West Coast Rd
Glen Eden, Auckland

west
dentalcare

09 818 8855

To advertise on this newsletter and support the school, please contact Newsletters Unlimited, Ph/Fax: 09 817 3887, or Email: newsletters@xtra.co.nz