



Newsletter

Avondale Primary School
avondaleprimary.school.nz

Ph: 09 828 8929 • Fax: 09 820 3624
Email: office@avondaleprimary.school.nz
Crayford Street West, Avondale, Auckland 1026



Creative Learners, thinkers and communicators who can effectively make a difference

Warm greetings to all

Tomorrow we farewell two staff members. Mrs Edwards moves on after many years to be with family in Tauranga. Her vivacious personality and passion for the kids will be much missed and we wish her all the very best. Mr McCutcheon came to us more recently and has worked hard to build relationships with our families. This is very much appreciated. I am sure his wife will be pleased that he is now working closer to home.

My time is also over at Avondale Primary. It has been a privilege to have worked within such a wonderful community. To all staff – thanks for putting up with me! Parents, you have been great supporters, thanks also to you. The Board gave me an opportunity 10 years ago; I have worked hard to make the most of this in the interests of the students. And kids – you know I believe in each of you. You have taught me a great deal. My appreciation for the grace and good humour you have shown. Next term will be exciting for you. The future is looking good and under the guidance of your new Principal Mr Clarke and the wonderful Mrs Wilkinson, the school is going to move forward with confidence.

Take care all.

Greg

Nga mihi ki a tatou

Apopo ka mihi matou ki nga kaimahi e rua. Ka neke a Mrs Edwards i muri i nga tau maha ki te noho tahi me te whanau i Tauranga. Ko tana ahua eka me tana hiahia mo nga tamariki ka tino ngaro. Ka hiahia ana ia kia tino pai rawa ia. I tata mai a Mr McCutcheon ki a matou i nga wa nei, a, kua kaha tana mahi ki te hanga whanaungatanga me o tatou whanau. He tino painga tenei. E mohio ana ahau ka koa tana wahine kei te tata tonu ia ki te kainga.

Kei te ngaro ano taku wa i te kura. He painga tenei ki te mahi i roto i taua hapori ataahua. Ki nga kaimahi katoa - he mihi mo te mahi tahi ki a au! E nga matua, he tino tautoko koutou, he whakawhetahi hoki ki a koutou. I hoatu e te Poari ki a au tetahi waahanga tekau tau ki muri; kua whakapau kaha ahau ki te mahi i te nuinga o tenei ki te painga o nga akonga. Ko nga tamariki - e mohio ana koutou e whakapono ana au ki a koutou. Kua whakaakona ahau e koutou ki te mahi nui. Ko taku maioha mo te aroha me te waimarie pai kua whakaatuhia e koutou. Ko te kupu o te wa e pai ake mo koutou. Kei te pai te heke mai, kei raro hoki i te aratohu a to Tumuaki hou, a Mr Clarke me te wahine whakamiharo a Mrs Wilkinson, ka haere tonu te kura me te maia.

Te tiaki i nga mea katoa.

Greg

dates for your diary

WEEK 10

Sept 29th **Blessing of the Taonga 10.15am**
Farewell assembly for Mr Chalmers 2pm
Last day of Term 3

Term 4 Week 1

Oct 16th **Niuean language Week**
First day of term 4
School assembly 10am

Oct 17th Sport Waitakere kiwiball sessions for Tui and Pukeko
Whanau Leader meeting

Oct 18th Sport Waitakere Taekwon Do sessions for Kea and Takahe

Oct 19th **Diwali**
Kea Trip to MOTAT

Oct 20th **Pukeko trip to MOTAT**

Week 2

Oct 23rd **LABOUR DAY** - Public holiday

Oct 24th Sport Waitakere kiwiball sessions for Tui and Pukeko
Whanau Leader meeting

Oct 25th Sport Waitakere Taekwon Do sessions for Kea and Takahe
Tui Trip to the Stardome
BYOD Parents sessions
3.15pm and again 6.30pm

Oct 26th Newsletter #16 comes home

Oct 27th **adidas fun run**

what is coming up?

Mon 6 Nov We welcome our new Principal, Mr Clarke

Fri 10 Nov Team Photo Day

Wed 15 Nov Waitakere Sport Athletics Competition

Special Events tomorrow

Greg has his last day with us as our Principal tomorrow.

To celebrate his retirement we have a few things planned.

We invite you to the following events:

Blessing of the Taonga
10.15am in our hall

Official Farewell Assembly
2.00pm in our hall

Whanau Leaders News

We are planning a sushi lunch order day next term, so watch out for our notice.

CAN YOU HELP?

We want to be wastewise! Is there anyone who has/can make tablecloths?

We need approx. 10... can you donate 1 or more?



Dimensions
2000mm x 900mm

Kia ora and Hello! Mr Chalmers, as we all know it will be your last term at Avondale Primary.

It felt like you were our father for the school, you always calm me down and made my school life better. You make sure our fights are ended. I will never forget you in my whole life.

Many good wishes for your family and friends.

Love from Miller Faamausili. Room 10

Values & virtues

Our focus for the next three weeks

Value: Integrity / Ngakau tapatahi

We have integrity. We mean what we say and say what we mean. We stand up for what we feel is right. We are our own leaders.

Virtue: Excellence / Tino pai-rawa

We give my best to the work I do. We dare to set noble goals. We choose excellence in all things.

term dates

TERM 3:

Last day tomorrow at 3pm

TERM 4:

Monday 16 October – Friday 15 December (TBC)
Labour Day (Public Holiday) – Monday 23 October

A message from our Wastewise Team

Almost half of the food waste thrown out in NZ households could have been eaten.

What can you do to reduce this at your place?????

A message from our Travelwise Team

Check before you step!

introducing . . . Our Whanau Leaders

We have 16 incredible Year 6 Leaders.

To acknowledge and thank them for the wonderful impact they are making around our school. No 9 is Phoebe and No. 10 is Henaci

Phoebe

Kowhai Year 6 Room 10

My Hobbies Are:

Reading, Writing, Gymnastics, Hockey, Climbing and drawing.

My interests are:

climate change, guinea pigs, archaeology and writing.

What does it mean to me to be a whanau leader?

I get to help the school lots and I get to make my last year at A.P.S more memorable and exciting

henaci

Matai Year 6 Room 12

Yo, yo, yo or hi

My hobbies - drawing, T-ball, rugby, Rainbow End, talking heaps at home and school, making new friends, family, climbing trees and playing tag

What does a whanau leader mean to me?

Respect is important to me and I can be a role model to show others how to be respectful to teachers. I get to use the APS virtues and values such as integrity.

adidas School fun run

Avondale Primary School will be holding an **adidas School Fun-Run** as a major fundraising event this year. The event will be held on **Friday 27th October** within the school grounds.

We're holding the **adidas School Fun-Run** as a fundraising event this year!

The School Fun-Run promotes healthy and active lifestyles to our students in a fun and engaging way! It's all about participation and we're organising a great day for our school community. Family support is key to our fundraising success and we encourage all students to get involved.

Sponsorship forms were sent home with your child last week. Students who raise just \$10 or more will receive a reward for effort. In the Sponsorship Form you will also find many other benefits like the chance to win a Samsung Tablet every month!

The adidas School Fun-Run is a healthy fundraiser that ensures all schools have a viable alternative to junk food fundraising. The event sends the right message to students about having fun while getting involved and being active.

Each year we hope to create a day of fun for the students and their families with the **School Fun-Run**, we would like to welcome parents and family members to attend the **School Fun-Run** event day at the school on **Friday 27th October** to help cheer on the students. **Students are encouraged to dress in their Whanau Colour on the day.**

If you would like to volunteer and help on the day please contact me on the details below. I would love to see you at our event.

Thank you, good luck and happy fundraising!



Eco Soap

We are selling **Eco Soap** as a school fundraiser. Each bar costs \$2.50 to buy and \$1.00 comes back to us.

We have two kinds:
lemongrass grapefruit & mint



digital Citizenship

Digital Citizenship is about your rights, roles and responsibilities in the digital world. It goes beyond just being safe online.

Tip # 5

Making the right choices about photos I can tell which pictures of me, my classmates, and my school should be online and which should not.



School Sun hat

Your child requires a school sun-hat as outlined in our school's Sun Protection Policy. These hats are to be worn when children are outside during day-light saving term time and are kept at school. Children who do not have a hat are required to remain seated in a shaded area. The hats are available for purchase at the office at \$8.

Waitakere half Marathon, 11km & 5km run/walk

SUNDAY 15th OCTOBER 2017

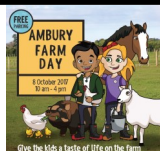
We have entered our school in the Waitakere Half and Fun Run/walk fundraiser. For every adult who enters the race and registers with our unique code... **AVONDALEPRIMARY** - \$5 comes back to our school.

To register <http://www.waitakerehalf.co.nz/>



Disclaimer

The following notices are for your information only. The staff and BOT do not necessarily endorse or recommend them.



Ambury Farm day

Ambury Farm Day is once again on at Ambury Regional Park Mangere Bridge on Sunday 8th October 2017 10am - 4pm



Diwali Festival 2017

Trust Arena, Henderson. Sun 1 October - 1.00pm onwards
A day and night full of light, music and dance
<https://www.facebook.com/WaitakereIndianAssociation/>

Swimming

Looking for a 'local' pool for lessons? Auckland's best kept secret - just a couple of stations along the railway line at Morningside...
Health & Sports Swim Club, 2 Morningside Drive, Kingsland.
Phone 845 3305 or Text 'SWIM' to 2414. E: swimclub@healthandsports.co.nz www.healthandsports.co.nz

Suburbs School Holiday programme

Shadbolt park - 200 Portage Road, New Lynn.
Wed 11th, Thurs 12th, Fri 13th October.
3 days for \$135.00 Contact 021 155 5090



Animates

Cnr Portage Road/ Clarke St, New Lynn
11am Thursday, 5th and 12th October
Kids Safe with Dogs sessions. Visit and get a receive a Free activity book and certificate on completion.

Kelly Club

Just a reminder that Kelly Club will be operating over the school holiday period. To register, either pop in before or after school place or directly online
<https://www.kellyclub.co.nz>



Summer Season 2017-2018

Online Registration is NOW OPEN!

<https://memberdesq.onesporttechnology.com/3292>

In person registrations:

Wednesday 4th October 4.30pm-6pm
Wednesday 11th October 4.30pm-6pm
Club shed, East dale Reserve

Tiny tots 1-3 Years
(\$30 + Uniform)

Juniors 4-6 Years
(\$40 + Uniform)

Seniors 7-14 Years
(\$70 + Uniform)

Club Nights Wednesdays 5-7pm

First club night for the season is Wednesday 18th October

Visit our website www.avondaleathletics.org.nz or email avondaleathletics@gmail.com

PLEASE SUPPORT OUR ADVERTISERS WHO SUPPORT OUR SCHOOL

Full GP Services incl ACC
ACC - free (enrolled patients).

Enrolled GP weekday fees
0-17yrs FREE 18yrs+ \$17
Open 7 Days
Mon to Fri 8-8 Weekends 9-2
Ph 8200085
1784 Great North Rd, Avondale



avondale
family health
centre

avondale
integrated
health

- Horizon Dental
- Physiotherapy & Acupuncture
- Podiatrist
- Chiropractor
- Midwives
- Avondale Plunket
- HearMe (free hearing test)
- Psychologist & Counseling Service



Avondale Primary

We provide safe, fun and affordable programmes for your children!

Before School Care: 7.30am – 8.30am

After School Care: 3.00pm – 6.00pm

Holiday Programme: Various hours

(WINZ SUBSIDIES AVAILABLE!!!)

Please contact us on avondale@kellyclub.co.nz and 021 120 3373

or visit our website www.kellyclub.co.nz

Weekly activities include: Sports, Crafts, Cooking, Games and trip days.

HARCOURTS AVONDALE

Your Local Real Estate Agency

OFFERING SPECIAL BUDGET PACKAGES FOR FAMILY & FIRST-TIME HOME BUYERS IN THIS SCHOOL

For honest, reliable, sound and efficient service in regards with any of your Real Estate needs, call me anytime.

Here to help you move forward.

P: 09 825 1018 M: 021 880 080

E: mehulmody@harcourts.co.nz

Call me anytime for a free market appraisal



MEHUL MODY

"Committed to Achieving Customer Satisfaction"



Sales, Service and Spares for all outdoor power equipment



- LAWNMOWERS
- WEEDEATERS
- BLOWERS
- CHAINSAWS
- WATER BLASTERS
- HEDGE TRIMMERS
- SHARPENING SERVICE

Phone: 09 828 9438
www.avondalemowers.co.nz
2 St. Georges Road, Avondale • avondale_mowers@xtra.co.nz





Prochem PHARMACY
Avondale Branch

Your Community Pharmacy

- Prescriptions • Vitamins • Skin Care
- Beauty Products • ECP • Deliveries
- Sport Supplements & Nutrition • Pain Relief • Medico Packs

Opening Hours:

Monday-Friday: 8.30am-8.00pm – Saturday: 9.00am-2.00pm

1882 Great North Road, Avondale

Phone: 09 828 1710 Fax: 09 828 1720

PACIFIC LOANS LTD

Fast, Friendly, Cash Loans with a Smile

Phone: 09 820 2484 or 0800 744 227

2018 Great North Road, Avondale

www.pacificloans.co.nz

TONY MATICH MOTORS LTD

AUTO ELECTRICAL & ALL MECHANICAL REPAIRS
LPG & CNG INSTALLATIONS & SERVICE
W.O.F. ISSUED

2033 GREAT NORTH ROAD, AVONDALE

PHONE: 09 828 0257 FAX: 09 820 3427

matich@clearnet.nz

5% Discount for Staff and Families of Avondale Primary

Your caring health professionals...



Avondale Family Physiotherapy

Call us for an appointment

09 889 2913 or 021 0229 8838

83A Rosebank Road, Avondale

Web: www.avondalefamilyphysio.co.nz

ACC Registered

HELP

Help us to continue this free service for your school next year by advertising in this newsletter. What better way of keeping your business in front of the local community and help your school.

The cost is very reasonable!

Phone Newsletters Unlimited

(09) 817 3867



Dr Scott

Dr James

Dr Eluira

Dr Inah

Dr Talha

Ph: 09 818 8855

info@dentalcarewest.co.nz

182 West Coast Rd

Glen Eden, Auckland

west
dentalcare

09 818 8855

To advertise on this newsletter and support the school, please contact Newsletters Unlimited, Ph/Fax: 09 817 3887, or Email: newsletters@xtra.co.nz