



Newsletter

Avondale Primary School
avondaleprimary.school.nz

Ph: 09 828 8929 • Fax: 09 820 3624
Email: office@avondaleprimary.school.nz
Crayford Street West, Avondale, Auckland 1026



Creative Learners, thinkers and communicators who can effectively make a difference

Kia ora mai tatou

A huge thank you to everybody for the support at the Quiz night on Saturday. I believe the amount raised is around \$6,000 - an outstanding effort. These evenings are becoming something of a hallmark of our hardworking DP Kim, and it is important to acknowledge the work she did behind the scenes to make the evening such a success. I know that Kim would agree with me though when I also recognise that she did have an amazing team of parents, staff and students around her. Wonderful stuff folks.

Every year some parents opt for their children to take part in what are known as the Australian Exams. These are skills-based education assessment tasks for all of the curriculum areas and have proven to be popular with our families in recent years. On Tuesday, the students involved sat the final test, mathematics. I am sure the parents of these students who have seen the test papers would agree that these are very challenging! So well done to all those brave souls who gave them a go. Results are now coming in and certificates will be presented at assembly next week.

Thanks for your patience with regard to the fence around our school. The process has been confirmed and you will be notified as soon as we know exact timelines. As I write I can see a lot of litter on our fields and hopefully a fence will be something of a deterrent.

Another big Cluster event yesterday saw our students competing in hockey, soccer, Rippa Rugby and netball. From all accounts, the kids did very well, with good results on the field and excellent behaviour and general sportsmanship around the venues. Organising teachers did a great job and the wonderful Mrs Sililoto was such a gem in looking after those students who did not attend. Well done everybody.

Go well.

Greg

Arriving at school on time

There is an increasing number of students who are arriving to school well after the bell at 9am.

It is important that all children are at school by 8.55am, prepared to start learning at 9am. Being present at the beginning of the day allows children to settle and focus on the day ahead.

Thank you for your support



dates for your diary

WEEK 5

- Aug 21st** School assembly 10am
- Aug 22nd** Whanau Leader meeting
- Aug 23rd** **TEACHER ONLY DAY**
- Aug 24th** Blockhouse Bay Open Day
Pukeko Syndicate Maths W/shop for parents

- Aug 25th** **Daffodil Day - wear Yellow**
Lunch Orders
Whau Pacific Festival, 'The Turtle and the Plastic' performance
Last day for our three AUT students teachers

WEEK 6

- Aug 28th** Welcome to our Japanese Intern Momona here for two weeks
Welcome to two new AUT Student teachers
School assembly 10am
- Aug 29th** Whanau Leader meeting
The perfect Gift Show
Takahe and Kea parent interviews
- Aug 30th** **Whanau Leaders SPCA CUPCAKE DAY**
- Aug 31st** Newsletter #12 comes home
Takahe and Kea parent interviews

- Sept 1st** **Red Nose Day - wear RED**

what's coming up!

Week 7

- National Tongan language Week**
- Tues 5th Sept** Pukeko Farm visit
- Wed 6th Sept** Sport Waitakere Basketball tournament
- Thurs 7th Sept** School Cake Stall

Week 7

- Wed 13th Sept** **Cultural Day**

teachers Only day

Reminder that we have a Teacher ONLY Day next **Wednesday 23rd August**. School will be closed for instruction on this day.

Kelly Club will be operating. If you would like to register you child/ren, either pop in before or after school and reserve a place or register directly online <https://www.kellyclub.co.nz/>



Our first Breakfast Hub was a real success. Thanks to everyone who came.

Our next is on Wednesday 13th September.

Message from our Whanau Leaders

Cultural day

This term each class is focussing on **Culture**. The big learning is 'My culture fits with your culture!' As part of this, we will be hosting a **Cultural Open day on Wednesday 13th September**. There will be opportunities to see items, experience art & craft, share learning and maybe even try food. Please keep some or all of this day free - more information to come including a timetable.

Winter School beanies

Red school beanies for winter. The cost is \$3.00.



A message from our Wastewise Team

Our team are focusing on waste free lunches. There are spot prizes each week for children who have waste free lunches.



Values & virtues

Our focus for the next three weeks

Value: Creativity/ Waihanganga-tanga

We are creative. We have special gifts and we are willing to develop them. We use our imagination. We are open to inspiration. We are happy to be ourselves.

Virtue: Enthusiasm/Kai-ngakau

We are full of enthusiasm. We look on the Brightside. We give 100% to whatever we do. We use my imagination. I am open to the wonders in store for me today.

term dates

TERM 3:

Monday 24 July – Friday 29 September
Teacher Only Day (school closed) Wednesday 23 August

TERM 4:

Monday 16 October – Friday 15 December (TBC)
Labour Day (Public Holiday) – Monday 23 October

friends of avondale

Thank you Thank you Thanks You
We raised a whopping \$6000.92 from the School Quiz last weekend

Got some new ideas???? Email Kim at kimw@avondaleprimary.school.nz
Or Sharron at sharrone@avondaleprimary.school.nz

Please check out our facebook page for regular updates <https://www.facebook.com/FriendsOfAvondalePrimary/>

A message from our Travelwise Team

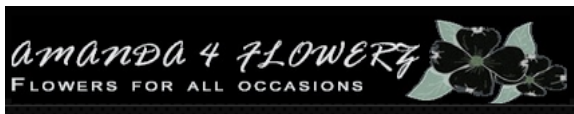
KEEPING SAFE

Please use the Kea Cross when picking up your children afterschool. There are a few parents calling their children to cross the road everywhere to meet them. This is unsafe with such a busy road at 3pm.

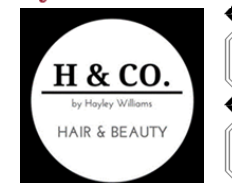


Quiz Night

WE WOULD LIKE TO THANK THE FOLLOWING ORGANISATIONS FOR THEIR SUPPORT AND CONTRIBUTIONS to our school Quiz last Saturday night. We raised \$6000.92, which is an incredible result. A huge thank you to the Staff, Friends and Families of Avondale Primary School; to Mrs Edwards & team for the sweet & savoury platters; Ashton Brown our formidable MC, Amanda and Cooper for their expertise on the night; the gorgeous ex-students for coming to selling raffle tickets; the amazing marketing guru, Alexis and finally everyone who bought a table, dressed up and made the event such a success. Check out our FB page for some more great action photos. We thank you and 'let's do it again next year'!!!!!!



live your best life

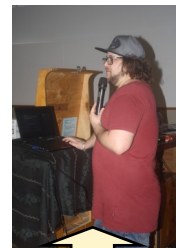


The Best Dressed team

The QUIZ Winners



Our Buzzy Bees



Ashton - Our MC

Disclaimer

The following notices are for your information only. The staff and BOT do not necessarily endorse or recommend them.

Sustainable Coastlines Mobile Phone Appeal

APS are collecting old mobile phone to recycle. If you have an old phone, send it along to school. This is part of the Sustainable Coastlines initiative.



Community Waitakere Charitable Trust

Come along to a Community Meeting to workshop turning ideas into a plan for the temporary rec and community hub on the 3 Guy's site. Saturday 19th of August from 2pm - 3:30pm (starting on time) at the Avondale Primary School Hall.

For more info, to receive project e-mails, or join the project team contact Shalema Wanden-Hannay | Community Developer Whau shalema@communitywaitakere.org.nz or text 0204 812 788

Immanuel Christian School Presents DANIEL

Cost \$10 adult, \$5 students.

Wed 27 Sept 7-9pm & Thurs 28 Sept 1-3pm / 7-9pm

Term 3 KidsLink Event

Angry Kids & Upset Families

Thursday 17th September 7-9pm @ Chrysalis Childcare 1 Jomac Place Avondale

Speakers:

Clair Zoharb - Play Therapist

Jennifer Pollard - Kids Coach

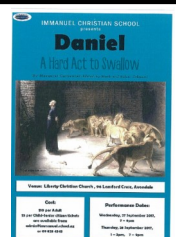
Amanda Perry - Counsellor

2 free tickets for KidsLink providers

email: jess@kidslink.co.nz to book



\$15.00 door sales for parents



PLEASE SUPPORT OUR ADVERTISERS WHO SUPPORT OUR SCHOOL

Full GP Services incl ACC
ACC - free (enrolled patients).

Enrolled GP weekday fees
0-17yrs FREE 18yrs+ \$17
Open 7 Days
Mon to Fri 8-8 Weekends 9-2
Ph 8200085
1784 Great North Rd, Avondale



avondale
family health
centre

avondale
integrated
health

- Horizon Dental
- Physiotherapy & Acupuncture
- Podiatrist
- Chiropractor
- Midwives
- Avondale Plunket
- HearMe (free hearing test)
- Psychologist & Counseling Service



Avondale Primary

We provide safe, fun and affordable programmes for your children!

Before School Care: 7.30am – 8.30am

After School Care: 3.00pm – 6.00pm

Holiday Programme: Various hours

(WINZ SUBSIDIES AVAILABLE!!!)

Please contact us on avondale@kellyclub.co.nz and 021 120 3373
or visit our website www.kellyclub.co.nz

Weekly activities include: Sports, Crafts, Cooking, Games and trip days.

HARCOURTS AVONDALE

Your Local Real Estate Agency

OFFERING SPECIAL BUDGET PACKAGES FOR FAMILY & FIRST-TIME HOME BUYERS IN THIS SCHOOL

For honest, reliable, sound and efficient service in regards with any of your Real Estate needs, call me anytime.

Here to help you move forward.

P: 09 825 1018 M: 021 880 080

E: meihulmody@harcourts.co.nz

Call me anytime for a free market appraisal



MEHUL MODY

"Committed to Achieving Customer Satisfaction"



Sales, Service and Spares for all outdoor power equipment



- LAWNMOWERS
- WEEDEATERS
- BLOWERS
- CHAINSAWS
- WATER BLASTERS
- HEDGE TRIMMERS
- SHARPENING SERVICE

Phone: 09 828 9438
www.avondalemowers.co.nz
2 St. Georges Road, Avondale • avondale_mowers@xtra.co.nz





Prochem PHARMACY
Avondale Branch

Your Community Pharmacy

- Prescriptions • Vitamins • Skin Care
- Beauty Products • ECP • Deliveries
- Sport Supplements & Nutrition • Pain Relief • Medico Packs

Opening Hours:

Monday-Friday: 8.30am-8.00pm – Saturday: 9.00am-2.00pm

1882 Great North Road, Avondale

Phone: 09 828 1710 Fax: 09 828 1720

PACIFIC LOANS LTD

Fast, Friendly, Cash Loans with a Smile

Phone: 09 820 2484 or 0800 744 227

2018 Great North Road, Avondale

www.pacificloans.co.nz

TONY MATICH MOTORS LTD

AUTO ELECTRICAL & ALL MECHANICAL REPAIRS
LPG & CNG INSTALLATIONS & SERVICE
W.O.F. ISSUED

2033 GREAT NORTH ROAD, AVONDALE

PHONE: 09 828 0257 FAX: 09 820 3427

matich@clearnet.nz

5% Discount for Staff and Families of Avondale Primary

Your caring health professionals...



Avondale Family Physiotherapy

Call us for an appointment

09 889 2913 or 021 0229 8838

83A Rosebank Road, Avondale

Web: www.avondalefamilyphysio.co.nz

ACC Registered

HELP

Help us to continue this free service for your school next year by advertising in this newsletter. What better way of keeping your business in front of the local community and help your school.

The cost is very reasonable!

Phone Newsletters Unlimited

(09) 817 3867



Dr Scott

Dr James

Dr Eluira

Dr Inah

Dr Talha

Hi! here are some tips for Primary School pupils:

- 1 Use your FREE treatment through the school dental service
- 2 Your teeth like to be brushed twice daily for two minutes
- 3 See us for your FREE orthodontic consultation

Ph: 09 818 8855

info@dentalcarewest.co.nz

182 West Coast Rd

Glen Eden, Auckland

west
dentalcare

09 818 8855

To advertise on this newsletter and support the school, please contact Newsletters Unlimited, Ph/Fax: 09 817 3887, or Email: newsletters@xtra.co.nz